

CERTIFICATE OF SURVEY

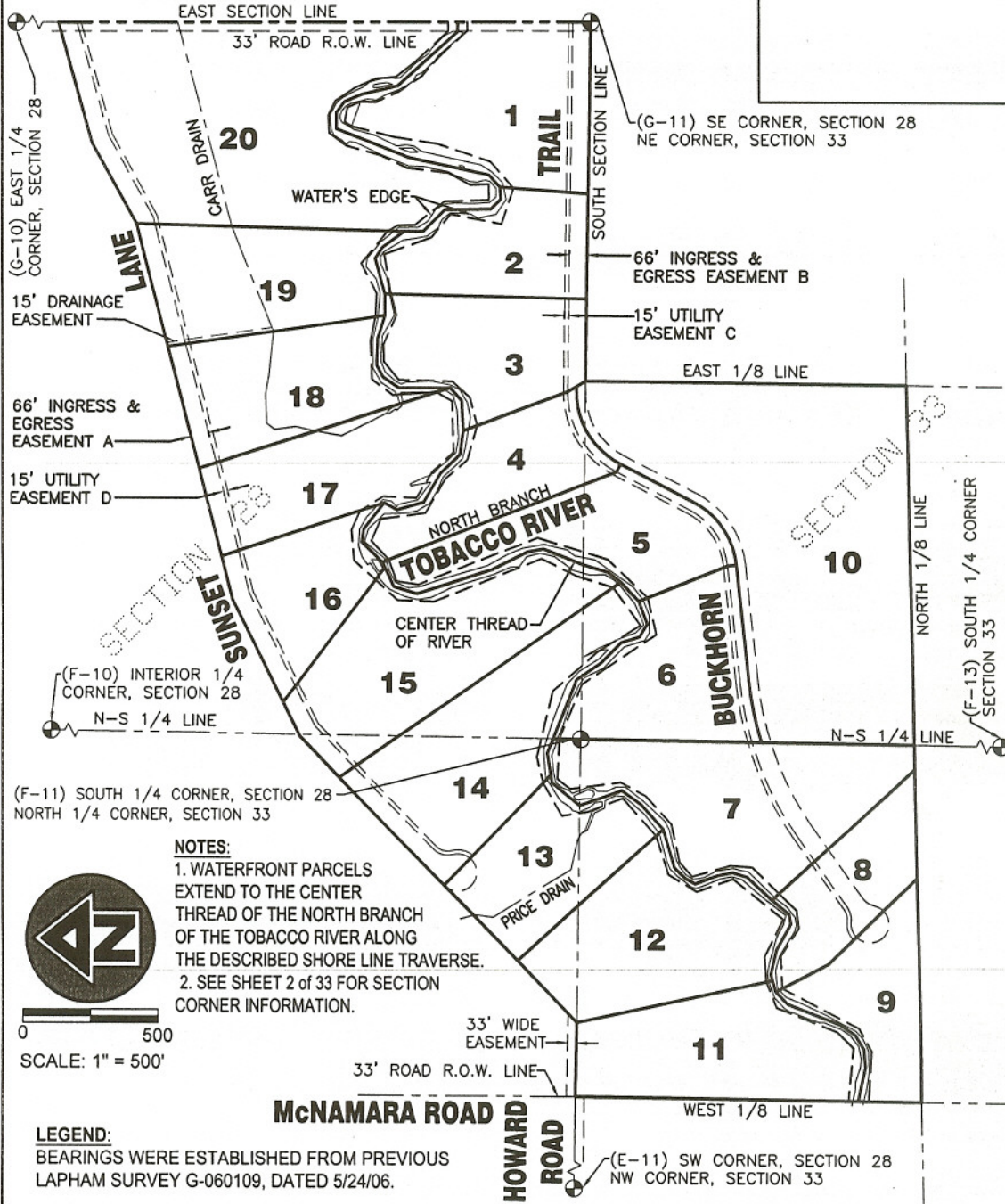
SECTION 28 & 33, T.18N.-R.2W., GROUT TOWNSHIP, GLADWIN COUNTY, MI

I, Scott O. Graham, hereby certify that on June 27, 2006 I surveyed the land described hereon, and that all of the requirements of PA 132 of 1970, as amended, have been met.

Certified to: Kent Russell

Property Description: SEE ATTACHED

GROUT ROAD



NOTES:

1. WATERFRONT PARCELS EXTEND TO THE CENTER THREAD OF THE NORTH BRANCH OF THE TOBACCO RIVER ALONG THE DESCRIBED SHORE LINE TRAVERSE.
2. SEE SHEET 2 of 33 FOR SECTION CORNER INFORMATION.



0 500
SCALE: 1" = 500'

LEGEND:

BEARINGS WERE ESTABLISHED FROM PREVIOUS LAPHAM SURVEY G-060109, DATED 5/24/06.



115 South Arcade Street Ph. (989) 426-4881
Gladwin, Michigan 48624 Fx. (989) 426-0422

www.laphamassoc.com

© 2006 COPYRIGHT, LAPHAM ASSOCIATES, INC.
UNAUTHORIZED COPYING IS PROHIBITED.

**ENGINEERING
PLANNING
ENVIRONMENTAL
SURVEYING**

Job No. G-060109B Sheet: 1 of 33

Scott O. Graham, P.S. No. 49107

COPY

Date: 08-10-06	Scale: 1" = 500'	Drawn by: RLD	
Field: MF, DK	Checked: <i>[Signature]</i>	Revised: 09-06-06	

CERTIFICATE OF SURVEY

SECTION 28 & 33, T.18N.-R.2W., GROUT TOWNSHIP, GLADWIN COUNTY, MI

(F-10) INTERIOR 1/4 CORNER, SECTION 28,
T18N, R2W, GROUT TOWNSHIP,
GLADWIN COUNTY, MICHIGAN.
WITNESSES: SET CAPPED IRON.
N54°E, 51.53' - SET 1/2" RE-ROD.
S02°W, 40.14' - FND 5/8" RE-ROD.
S60°W, 42.24' - SET P.K. NAIL & TAG WEST END CMP.
N56°W, 51.53' - SET 1/2" REROD.

(G-10) EAST 1/4 CORNER, SECTION 28,
T18N, R2W, GROUT TOWNSHIP,
GLADWIN COUNTY, MICHIGAN.
WITNESSES: FOUND 1/2"x18" REROD IN MON BOX.
N76°E, 42.47' - FND N&T IN S. FACE 4" PINE.
S44°E, 46.91' - FND N&T IN P.P.
S70°W, 60.58' - FND NAIL IN W. END of 24" S.L.C.P.P.
N22°W, 78.28' - FND 1/2"x18" REROD.


(G-11) SOUTHEAST CORNER, SECTION 28,
T18N, R2W, GROUT TOWNSHIP,
GLADWIN COUNTY, MICHIGAN.
WITNESSES: FOUND 1/2" REROD IN HOLE IN PAVEMENT.
N63°E, 48.40' - FND N&T IN N. FACE 10" PINE.
N48°W, 71.25' - FND N&T IN TELE. POLE.
S38°W, 60.45' - FND N&T IN TELE. STUB POLE POST AT RISER.
S39°E, 55.42' - SET N&T OVER OLD NE FACE 6" W. PINE.

(F-11) SOUTH 1/4 CORNER, SECTION 28,
T18N, R2W, GROUT TOWNSHIP,
GLADWIN COUNTY, MICHIGAN.
WITNESSES: SET CAPPED REROD #49107.
NORTH, 90'± - S. EDGE OF RIVER.
N40°E, 33.67' - SET N&T NW FACE 5" ASH.
S22°E, 40.63' - SET N&T NE FACE 5" MAPLE.
S46°W, 48.23' - SET N&T NW FACE 6" ASH.
WEST, 13'± - N-S BARBED WIRE.
N30°W, 67.15' - SET N&T SW FACE 5" ASH.

(E-11) SOUTHWEST CORNER, SECTION 28,
T18N, R2W, GROUT TOWNSHIP,
GLADWIN COUNTY, MICHIGAN.
WITNESSES: FOUND 1/2" RE-ROD.
S45°W, 68.85' - FND N&T 3" BASSWOOD.
N55°W, 82.10' - N&T IN 3" SCOTCH PINE.
N13°W, 33.44' - FND 1/2"x18" REROD.
S50°W, 50.35' - SET N&T IN NE FACE CORNER POST.
S45°W, 68.96' - SET N&T IN NW FACE 3" BASSWOOD.
N63°W, 82.04' - SET N&T IN NE FACE 6" SCOTCH PINE.

WEST 1/8 CORNER, SECTION 28,
T18N, R2W, GROUT TOWNSHIP,
GLADWIN COUNTY, MICHIGAN.
WITNESSES: FOUND 1/2" R.R. 1.5'± BELOW GRAVEL
SURFACE RAISED & SET P.S. CAP #49107.
N52°E, 76.84' - FND N&T S. FACE 18" MAPLE.
S42°E, 74.69' - FND N&T IN S. FACE OF P.P.
S48°W, 125.70' - FND N&T N. FACE 4" SPRUCE.
N81°W, 86.10' - NAIL IN S. FACE OF P.P.

(F-13) SOUTH 1/4 CORNER, SECTION 33,
T18N, R2W, GROUT TOWNSHIP,
GLADWIN COUNTY, MICHIGAN.
WITNESSES: FOUND 1/2" IRON 0.4' BELOW SURFACE &
1.0 N. OF E-W C/L.
N18°E, 95.73' - SW CORNER HOUSE FOUNDATION.
S53°E, 50.27' - SET N&T IN NE FACE OF 12"Ø POST.
SOUTH, 32.92' - FOUND LAPHAM CAPPED IRON
N39°W, 54.40' - FND N&T IN SW FACE OF POWER POLE

 <p>LAPHAM ASSOCIATES ENGINEERING PLANNING ENVIRONMENTAL SURVEYING</p> <p>115 South Arcade Street Ph. (989) 426-4881 Gladwin, Michigan 48624 Fx. (989) 426-0422</p> <p>www.laphamassoc.com © 2006 COPYRIGHT, LAPHAM ASSOCIATES, INC. UNAUTHORIZED COPYING IS PROHIBITED.</p>	Job No. G-060109B Sheet: 2 of 33	
	Scott O. Graham, P.S. No. 49107	
COPY		
Date: 08-10-06	Scale: NONE	Drawn by: RLD
Field: MF, DK	Checked: <i>JML</i>	Revised: 09-06-06